

The EXPERTS are coming TO YOU!

Introducing our on-line webinars
featuring experts discussing
current litigation topics at:

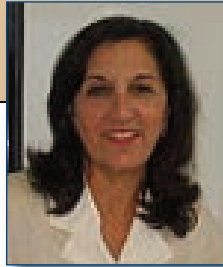
www.techmedexperts.com

Who we are:

I'm Rhonda Grallnick. I'm a registered nurse who founded Philadelphia Medical Advisors in 1983 with my sister, Elyce Klein, a paralegal. We've handled more than 15,000 cases since we started. I personally review and evaluate every case to select the right expert to give their medical opinion and testify in court.

We're experienced enough to know exactly what we're doing, and small enough so that our clients

always work directly with a principal of the firm.



Rhonda



Elyce

About our clients:

We work with plaintiff and defense attorneys, corporations, municipalities and government agencies all over the country. More than 10,000 lawyers have used our services, and some have been with us since we began 30 years ago. We go beyond medical malpractice and hospital negligence and provide experts in worker's compensation, product liability and personal injury cases as well. Unsolicited testimonials on our website speak to our competence and success.



What we do:

With our thirty (30) years of experience,

we find the medical or technical expert to match with a client who needs expertise on a case. The expert reviews the file to decide if there are grounds for a lawsuit and testifies during trial.

We've accumulated an extensive and always growing database of 4,000 experts all over the country.

Most of the experts are academics or board-certified practitioners of long standing with experience in court. We recruit from major medical schools such as Massachusetts General, Harvard, Yale, the University of Pennsylvania, UCLA the Cleveland Clinic and others. We also recruit through our large network of physicians.



Why pick us:

We know time is critical to our clients. We respond within 24 hours to a query. We meet tight deadlines and are always reachable by phone and email. Our clients get to pick an expert from a number of qualified candidates we provide.

We review every case – and we never give up if we think it has merit.

We're dedicated, we're diligent and we deliver!

MEDICAL ADVISORS, INC./TECHNICAL NETWORK CONSULTING SERVICE

790 Penllyn Pike, Suite 105, Blue Bell, PA 19422

800-666-7045 • 800-355-1329 • 215-653-7384 • FAX: 215-653-7382 • E-MAIL: info@techmedexperts.com